

## Adding analytics

GENERAL NOTE: SCROLL BARS ARE ADDED WHEN NEEDED, THEY ARE MISSING FROM ALL EXAMPLE IMAGES

**Option 1.** Analytics is on by default and added automatically to all Qt Quick elements. User can turn analytics off from a components properties by switch.



**Open item:** who will define categories? Is it Designer's task, and is it done in DS?

**Option 2.** Analytics is on by default. User can turn analytics on/ off by screen or by component. This is done from properties panel, or context menus in Navigator and Editor.

**Properties lists all the tracked components on the screen**, their type if possible (event, input...) and also shows the category, if it is defined.

**Listing tracked components is not necessary needed but it helps to see an overview** of them without browsing through all components are they on or off (dimmed) and to see what is the category.

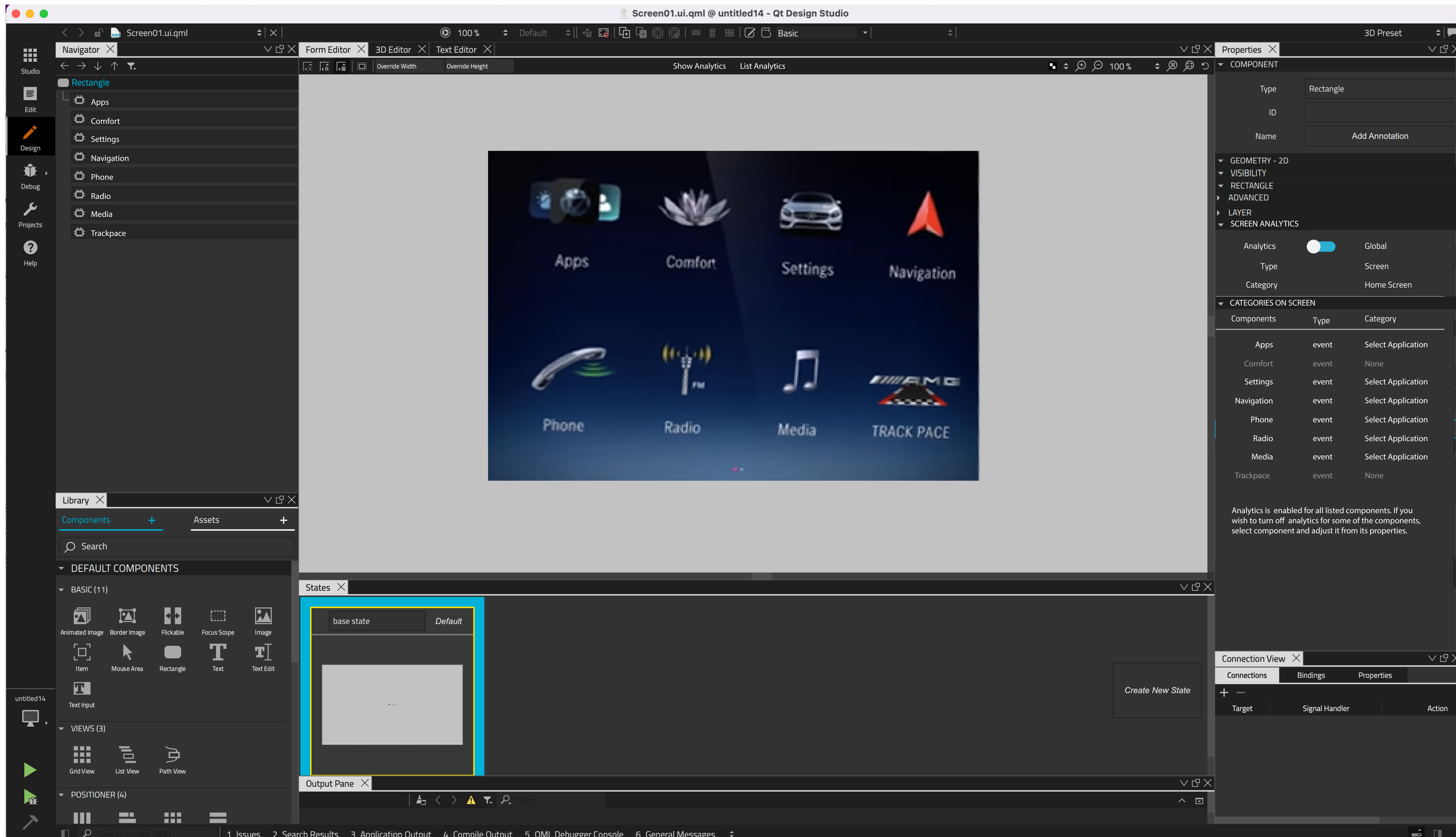
### How to define the category?

One option is to generate category automatically from component's name but that requires naming convention (for example openSettings).

Similarly, all events and attributes in the category should be mapped automatically without any effort from designer side. These are not necessarily visible during design phase and adding these manually is time consuming).

Other option is to add categories manually. There should be a predefined set of categories and related metrics, which can be imported and possibly edited.

**Open item:** Is it ok to change category names or should category management be restricted who can edit categories or metrics? (import only or import + edit, or create from scratch?)

A screenshot of the Qt Design Studio interface. The main canvas shows a dark blue screen with eight icons: Apps, Comfort, Settings, Navigation, Phone, Radio, Media, and TRACK PACE. The right-hand Properties panel is open, showing the 'SCREEN ANALYTICS' section with a toggle switch for 'Analytics' turned on. Below it is a table titled 'CATEGORIES ON SCREEN' with columns for Components, Type, and Category. The table lists the components and their associated categories and types.

| Components | Type  | Category           |
|------------|-------|--------------------|
| Apps       | event | Select Application |
| Comfort    | event | None               |
| Settings   | event | Select Application |
| Navigation | event | Select Application |
| Phone      | event | Select Application |
| Radio      | event | Select Application |
| Media      | event | Select Application |
| Trackpace  | event | None               |

## Show analytics

**Show analysis functionality allows user to see visually where Analytics is used.** Functionality is available in Toolbar and can be toggle on or off.

Indication is shown in Navigator, States and in editor.

**List analytics:** Lists all Screens and components that has analytics. User can view results based on Category where it is used, or based on Screen/ component which categories there are. If a category/ categories is selected from Category browser, List analytics shows results only for selected one.

The screenshot shows the Qt Design Studio interface with the following components:

- Navigator:** Lists components like Apps, Comfort, Settings, Navigation, Phone, Radio, Media, and Trackspace.
- Form Editor:** Displays the UI design with components highlighted by red boxes.
- Properties Panel:** Shows the 'SCREEN ANALYTICS' section with a toggle for 'Analytics' and a table of 'CATEGORIES ON SCREEN'.
- States Panel:** Shows the 'base state' as the default state.
- Output Pane:** Shows the output of the design.

| Components | Type  | Category           |
|------------|-------|--------------------|
| Apps       | event | Select Application |
| Comfort    | event | None               |
| Settings   | event | Select Application |
| Navigation | event | Select Application |
| Phone      | event | Select Application |
| Radio      | event | Select Application |
| Media      | event | Select Application |
| Trackpace  | event | None               |

Analytics is enabled for all listed components. If you wish to turn off analytics for some of the components, select component and adjust it from its properties.

missing category

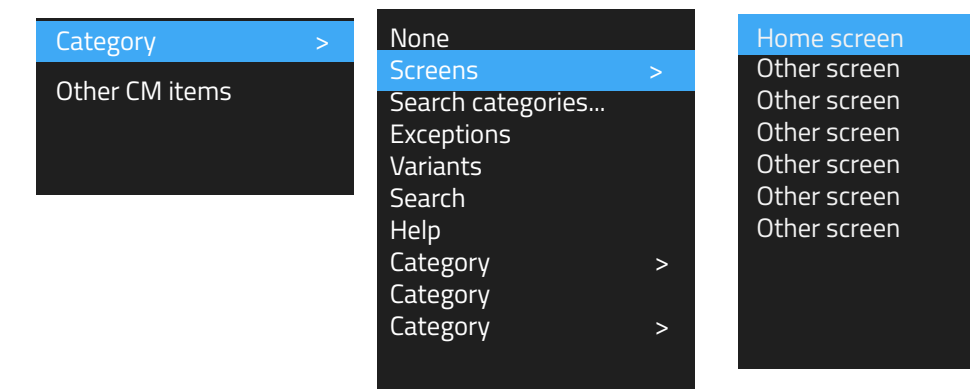
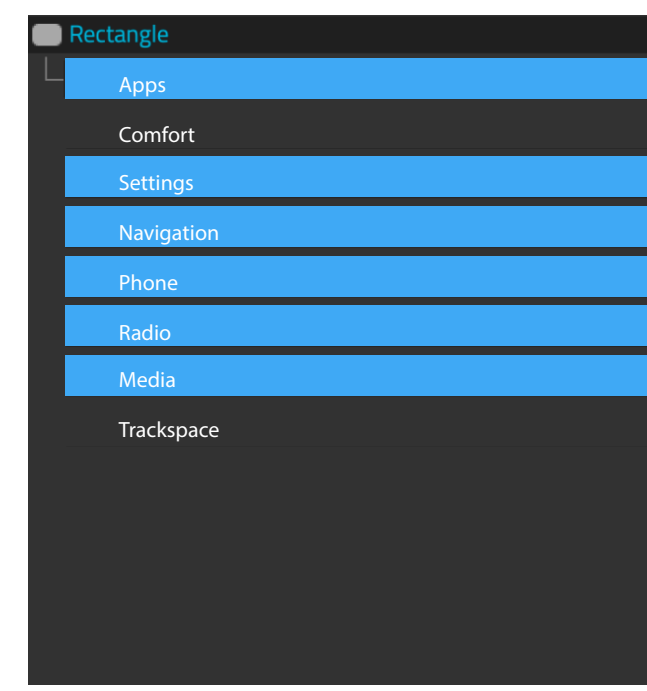


## Add categories manually

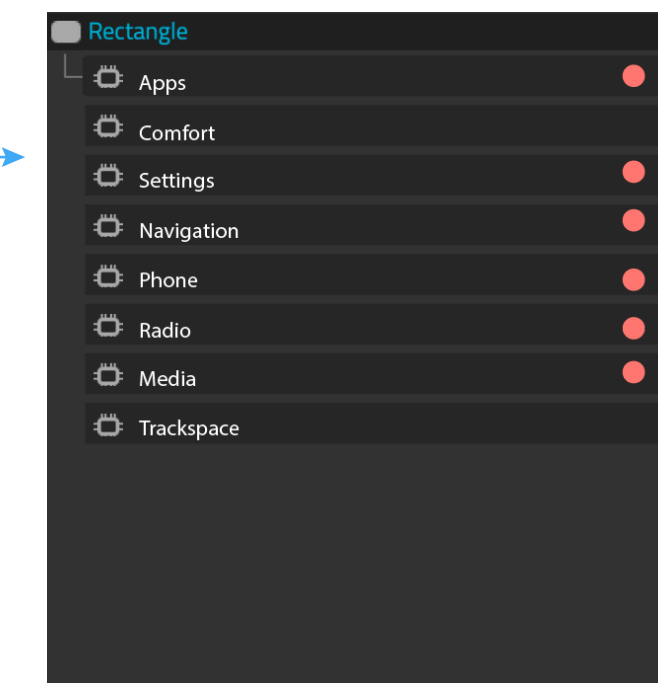
Categories can be added manually

**1. From context menu** in Navigator or in Editor. Multiselection is possible. However, the amount of the categories may be so big, that context menu is not working so well so there should be a simple search available --> opens a simple search dialog.

**2. From Category browser**, which reminds current Library. User can search Category groups and categories or select Category group from drop down to see categories, that are included to selected category.



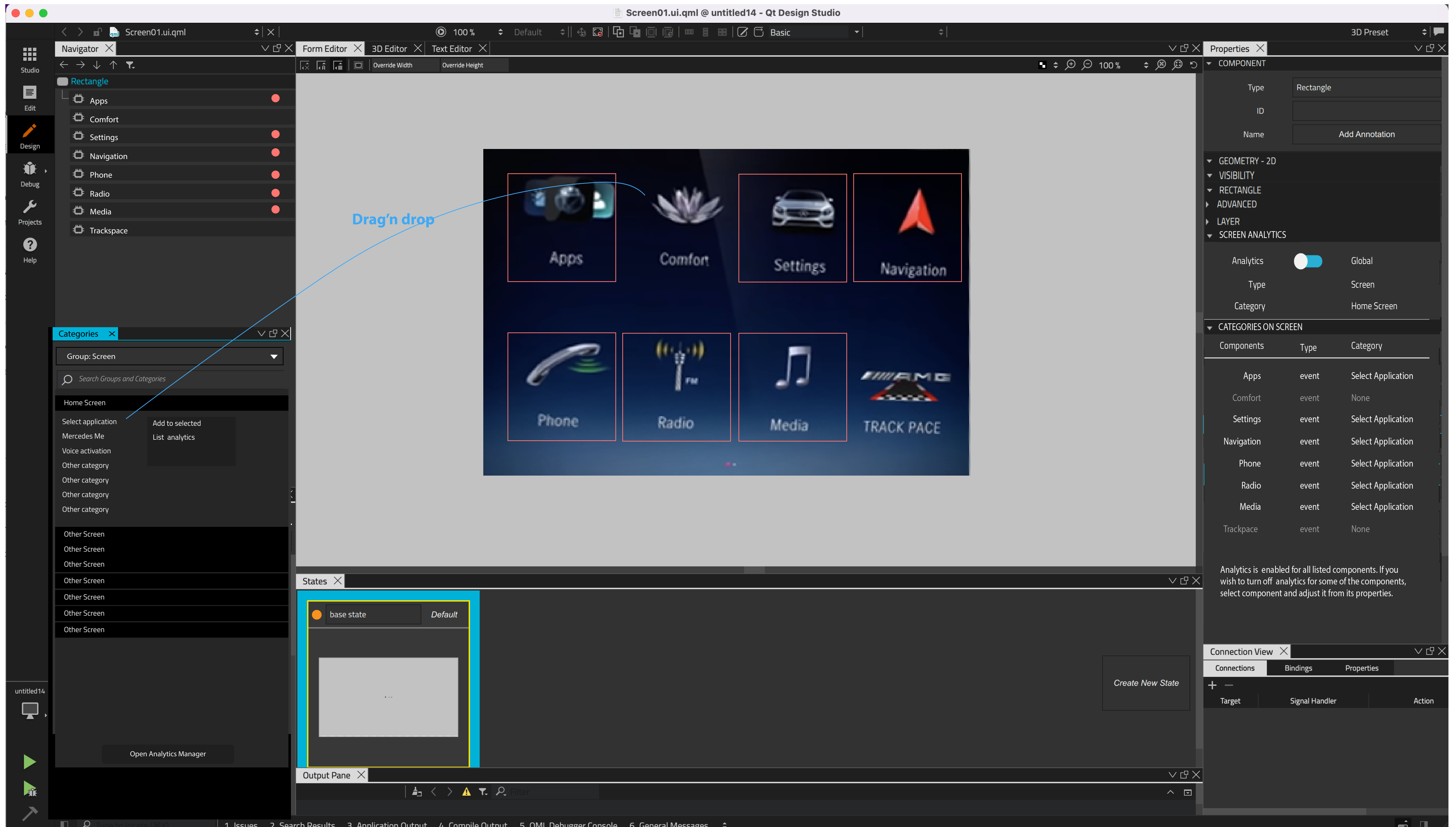
**None = Remove category**



Categories are **added by dragging** suitable onto the target item.

Another way is to select target item(s) and select **Context menu item "Add to selected items"**

**Category browser shows categories that are selected in Analytics manager.**



## Managing categories and metrics

Categories and metrics are managed in **Analytics manager**. It may include also other functionalities later on.

User can define what categories are in use in the Project and **shown in the Category Browser**

**HOW ABOUT USING DASHBOARD TO DEFINE WHAT KIND OF REPORTS ARE NEEDED AND THEN GENERATE THE CATEGORIES AND METRICS BASED ON THAT?**

MAYBE ADD TAGGING SYSTEM OR SOMETHING FOR REPORT TYPE?  
HEATMAP, SCREEN FLOW, ERRORS, USER PATH

### BROWSING MODE

#### All categories

- lists all categories in alphabetical order

#### By Group

- lists groups (should be alphabetical order)

#### By Template type

- For example (Automotive, Medical, Mobile, Navigation, general..)

#### Default Set

- Basic default file (General)

#### Only Active

- Shows only groups and categories that are tracked

ACTIVE DEFAULTS

SELECTED: Categories and metrics shown on right side panel

There are **basic templates provided** : they can be customized for the project by selecting needed categories and metrics and by creating new ones.

Category definition document can be created outside of the project and then imported, or it can be defined and edited in Analytics Manager by starting from **General template** or by choosing an **industry specific template**.

### GENERAL TEMPLATE STRUCTURE

#### Groups

##### Default categories and metrics

Always on by default, but categories can be toggled on & off

May contain several groups, like User, Session, App tracking

#### Groups

##### Custom categories and metrics

Custom categories & metrics for the project. These are project specific, not in template

May contain several groups

### TEMPLATE STRUCTURE FOR AUTOMOTIVE

#### Groups

##### Default categories and metrics

Always on by default, but categories can be toggled on & off.

May contain several groups, like User, Session, App tracking

#### Groups

##### Template dimensions and metrics for automotive

Project type specific templates, like automotive, medical...

May contain several groups

Some parts can be always on by default, but categories can be toggled on & off

#### Groups

##### Custom categories and metrics

Custom categories & metrics for the project. These are project specific, not in template

May contain several groups

NOTE: IMAGES AND CONTENT BELOW IS COPY PASTED FROM GOOGLE ANALYTICS (UA DIMENSIONS & METRICS)

File that defines Category Groups, categories and metrics

Open item: can user edit imported categories and items (Delete, add new, change name)?

The screenshot shows the 'Analytics Manager' interface. On the left, there's a 'Predictive search' bar and a list of categories under 'By group'. The 'App Tracking' category is selected. On the right, there are sections for 'Default Categories' (with items like App Installer ID, App Version, etc.), 'Metrics' (with items like Screen Views, Unique Screen Views, etc.), 'Custom Categories', and 'Custom metrics'. At the bottom, there are 'Save' and 'Cancel' buttons.

Add new category

Edit categories  
remove categories  
remove metrics

Select/deselect all in the category

Group: Home Screen

New Category Mercedes Me

New Category Voice activation

New Category Select application